

ROPE MARKER MACHINE

Machine for measuring, marking and cutting ropes

Yesterday



Today



This machine is suitable for measuring, marking and cutting ropes with diameter range from 8 to 25 mm. (1")
Marking can be done with one or two different colours, to fit the different needs. The machine can mark ropes at regular or irregular spaces. Cutting operation is done at hot temperature and it is accurate and clean.
Special customer requirements could be analyzed.

The models available are:

CM1



Measuring and cutting features

CM2



Measuring and marking features

Mod A single colour
Mod B double colours

CM3



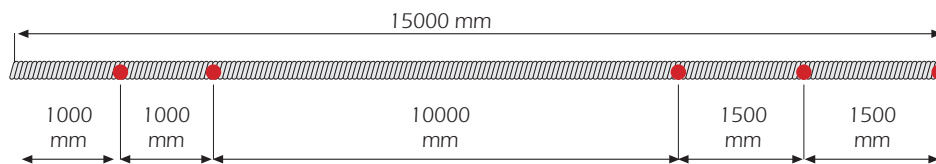
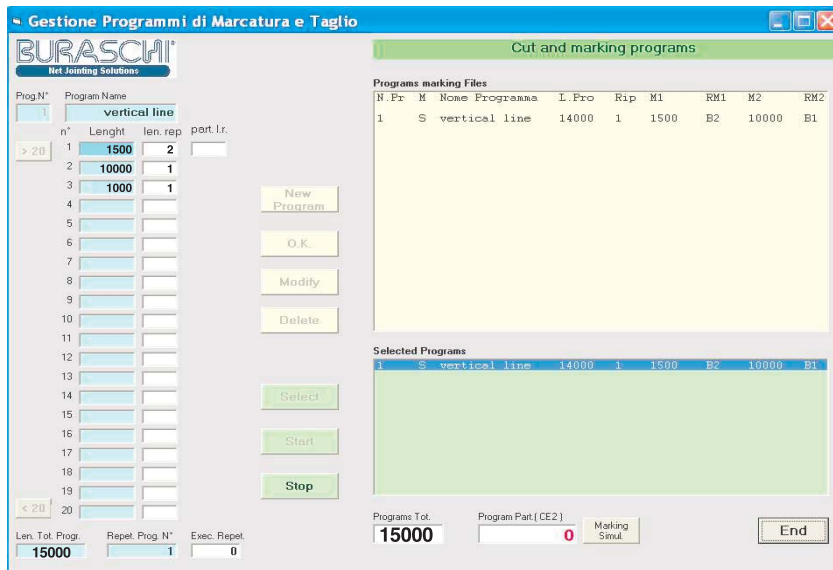
Measuring, marking and cutting features

Mod A single colour
Mod B double colours

Every model is supplied with a programmable logic controller (PLC) and a friendly SAW - (see following screen) -

ROPE MARKER MACHINE

Operator screen



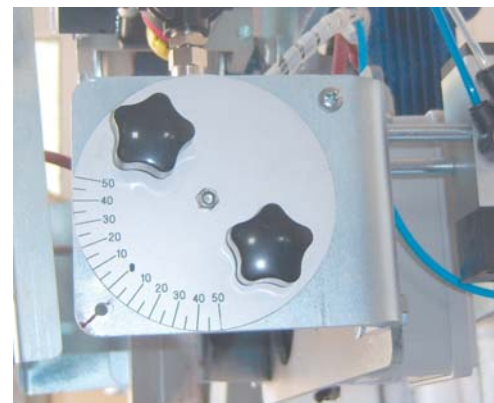
Cutting



Angle cut



Straight cut



Technical data:

- Transmission pulley and brake at 1800 mm height from the ground
- Powered pulley coated with rubber
- Idle pulley for pneumatic contrast
- Electronic meter with instrument for setting marking cycles
- Inerasable bicolors marker
- Rope feeding speed from 5 to 30 meters/minute
- Air compressor
- Knot sensor and rope end sensor
- Frame with locking feet and wheels
- Hot cutter system and smoke vacuum
- PC serial port
- Voltage: 220 - 240 Volts single phase